

TECH ARTICLE

Paper Pickup Jam in the CLJ 4600/50

If you try to print duplex on a Color LaserJet 4600 or 4650 in which the Junction Guide (Fig. 1) is broken from the Junction Guide Assembly (Fig. 2), the page will stop in the Paper Pickup Asm as shown in Fig. 3.

Liberty Parts Team sells the Junction Guides for both the 4600 and the 4650. LPT also offers the entire Junction Guide Asm for the 4600 only, but this very rarely needs replacement.

This article describes the replacement of the Junction Guide.

1. Remove Rear Cover (Fig. 4).

Remove two screws from the Rear Cover and pull out on the lower left of the cover to loosen and remove it.

2. Remove Fuser.

3. Remove Top Cover.

a. (Fig. 5) Tip the cover forward slightly and squeeze the white plastic clips on the damper arm to release this arm from the left side of the cover.

b. (Fig. 6) Remove the retaining block from the right side of the cover.

c. Pull the cover to the left to re-

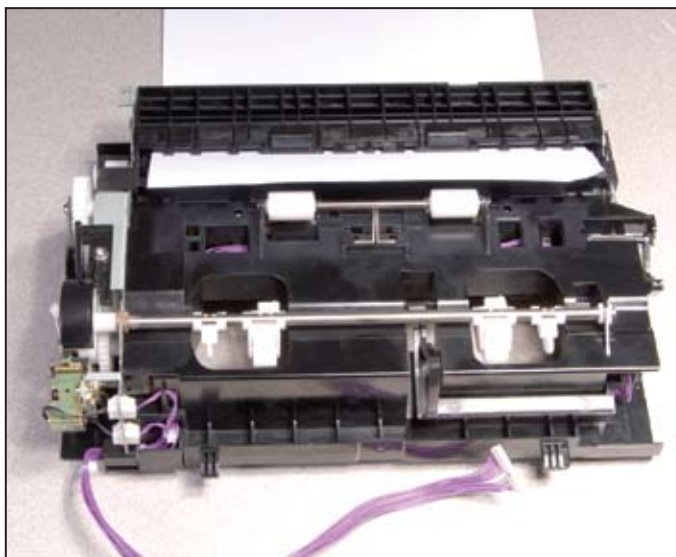
NOTE SIMILAR NAMES & PART NUMBERS



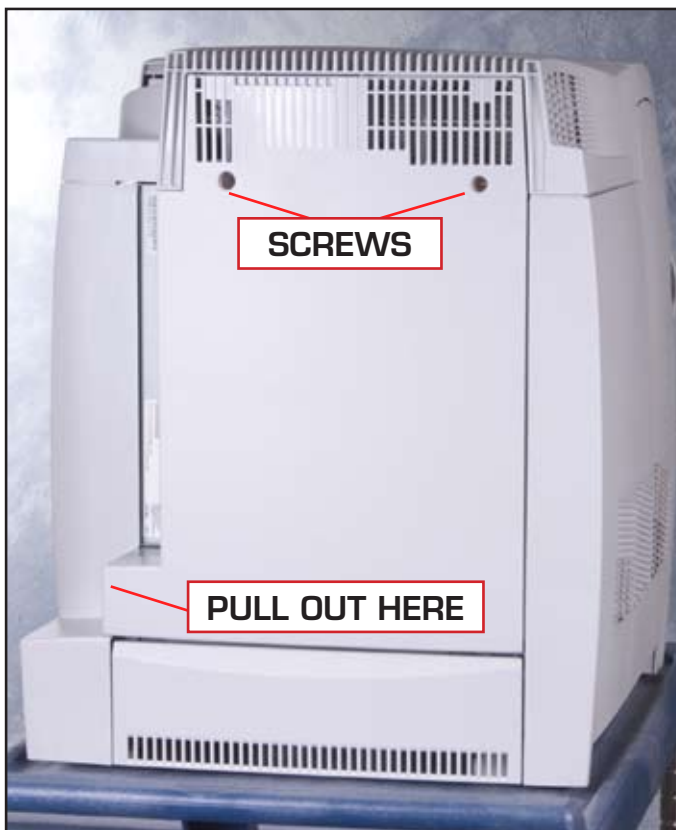
1 4600 Junction Guide: RB2-8306-N; **4650**: RB2-8306-GD2-A



2 4600 Junction Guide Asm: RB2-8306-A



3 Jam in Paper Pickup Asm caused by broken Junction Guide



4 Rear Cover Removal

lease the right-side hinge pin, then pull it to the right to release the left-side hinge pin, freeing the cover.

4. Remove Rear Top Cover.

a. (Fig. 7) Remove three screws.

b. (Figs. 8, 9) Pry the Rear Top Cover from the Right Cover with a screwdriver. Then pry the left side to free the rear top cover.

5. Remove Left Cover.

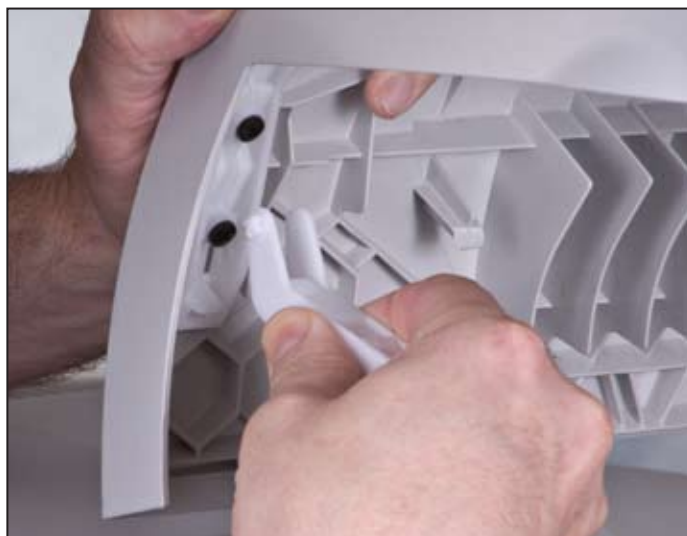
a. (Figs. 10, 11) Remove one screw and disengage the two locking tabs. Tilt cover away from printer to remove it.

6. Remove DC Controller Shield (Fig. 12)

Remove nine screws (and possibly a 10th screw at the rear of the printer, indicated by dotted circle in Fig. 12). Remove the shield.

7. Remove the Transfer Belt.

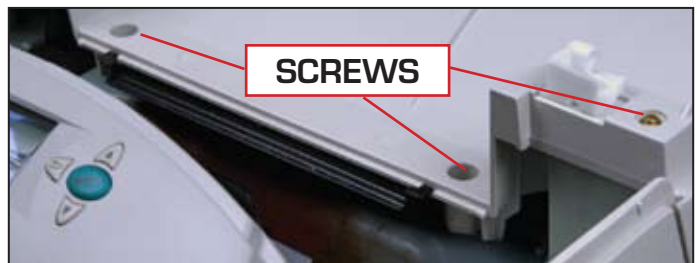
Press the blue release tabs.



5 Top Cover Removal: Damper Arm



6 Top Cover Removal: Retainer Block



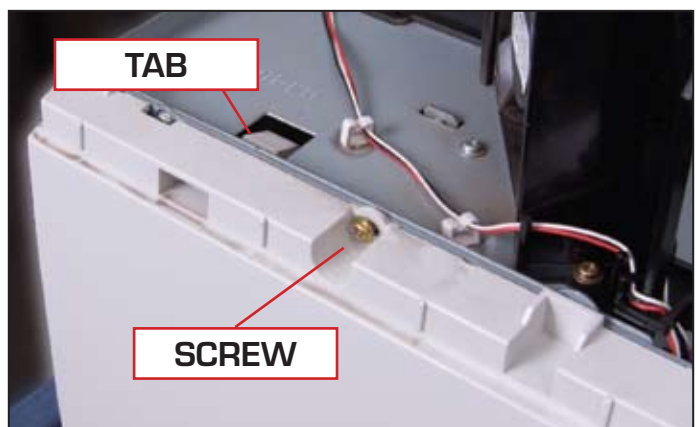
7 Rear Top Cover Removal: 3 screws



8 Rear Top Cover Removal: Pry right side



9 Rear Top Cover Removal: Pry left side



10 Left Cover Removal: Screw, first locking tab

8. Remove & cover toner cartridges.

9. Remove Paper Pickup Asm.

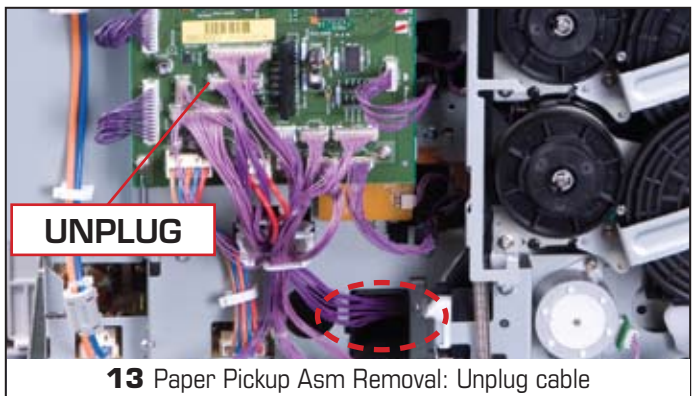
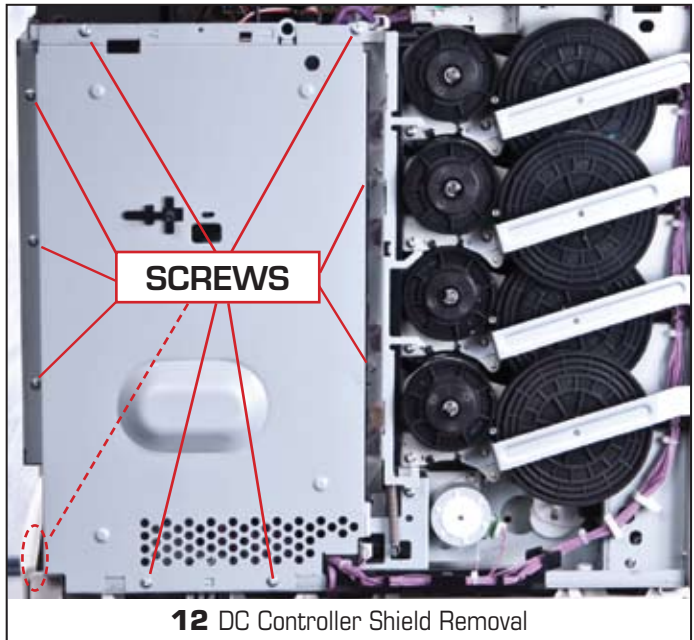
a. (Fig. 13) Unplug and separate the indicated cable. When the Paper Pickup Asm is removed, this cable will pass through the indicated duct opening.

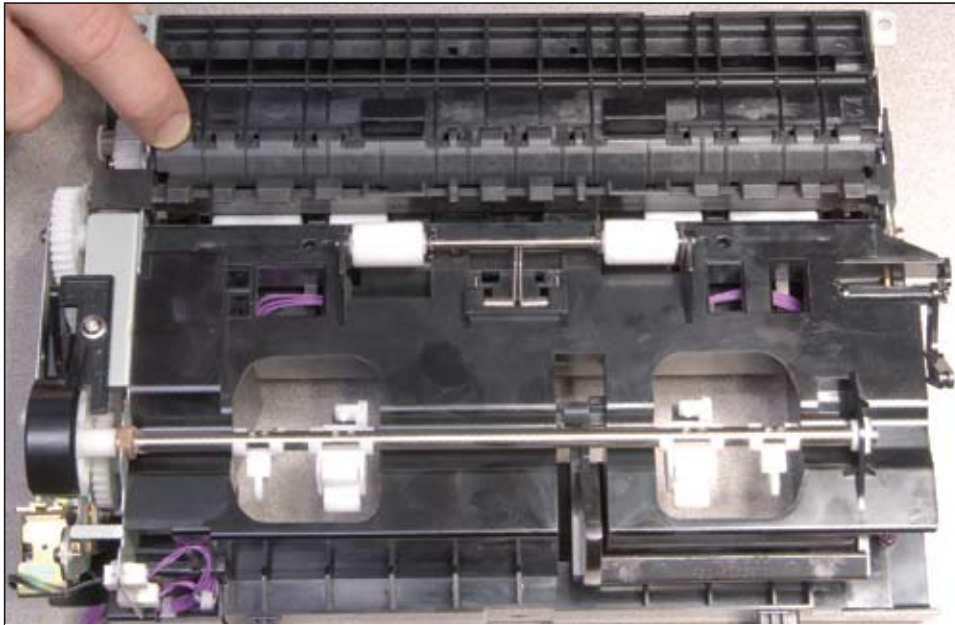
b. (Figs. 14, 15). Raise up ETB latch receptacles, so they appear as in Fig. 15. As they move stiffly, a screwdriver will help, especially when resetting them.

c. (Fig. 15). Remove two screws and lift and pull out the Paper Pick-up Asm, guiding the cable through the duct. The cable will need to be guided through the duct upon reinstallation.

10. Remove Junction Guide Asm.

The Junction Guide Asm (Fig. 2) is mounted to the bottom of the Paper Pickup Asm (Fig. 16). To remove it, simply remove one screw (Fig. 17), slide that end of the Junction Guide





16 Junction Guide Asm Replacement: Installed in the Paper Pickup Asm



17 Junction Guide Asm Removal

Asm slightly away from the Paper Pickup Asm, and then lift it out.

Dispose of the loose, broken Junction Guide.

B. Replace the Junction Guide Asm.

When installing the new Junction Guide, note that there are two mounting nubs on one end, and only one on the other end.

Insert the single nub into its hole (Fig. 18). Then insert the double-nub end (Fig. 19, 20). Place the repaired Junction Guide Asm in the Paper Pickup Asm (Fig. 17), secure it with the screw and reverse the instructions to reassemble the printer.



18 Junction Guide Asm Replacement: Single-nub end



19 Junction Guide Asm Replacement: double-nub end



20 Junction Guide Asm Replacement: double-nub end

