

MAINTENANCE KIT INSTRUCTIONS

HP LASERJET 4000, 4050, 4100

KIT CONTENTS (Figure 1)

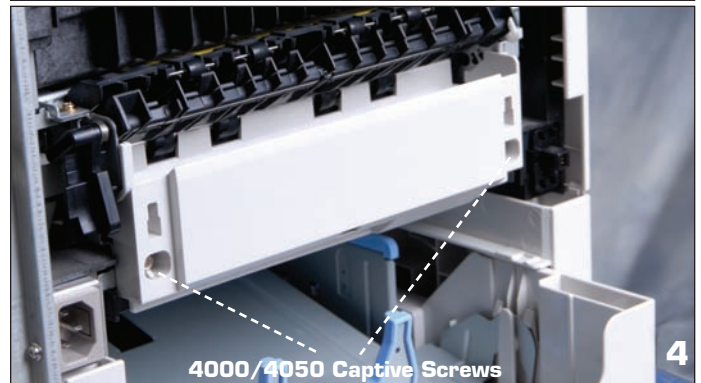
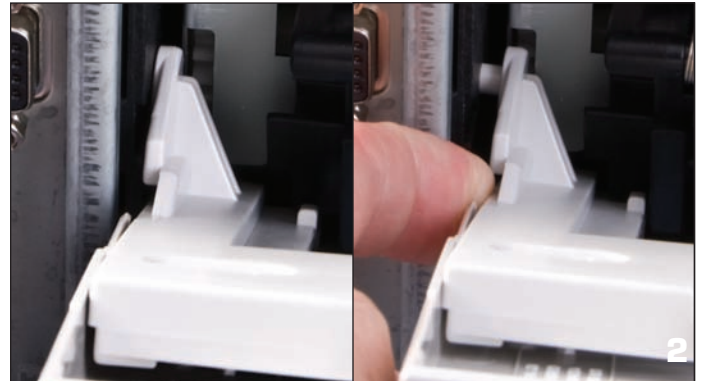
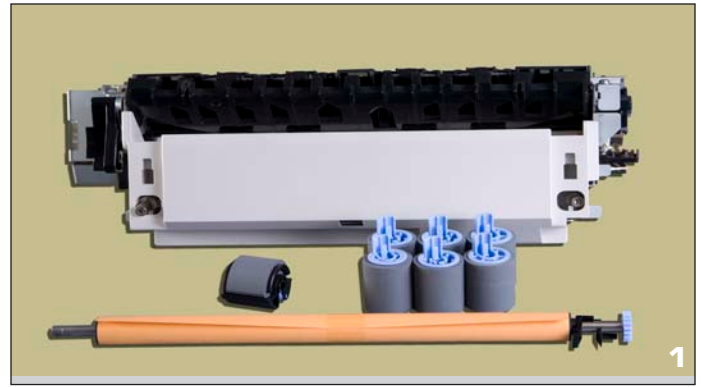
Qty.	Part Name	Part Number 4000/4050	Part Number 4100
1	Fuser	RG5-2661	RG5-5063
1	Transfer Roller	RG5-4283	RG5-5295
1	MP Pickup Roller	RG5-3718	RG5-3718
6	Feed/Sep. Rollers	RF5-1885	RF5-3114

FUSER REPLACEMENT:

1. Turn the printer off. **Warning: The fuser may be hot!**
2. **Remove Rear Cover (Figure 2).** Facing the rear of the printer, remove the rear cover/rear output bin by opening it partway, flexing it enough to pop one hinge pin out of the frame, and then sliding the other hinge pin out.
3. **Remove additional covers and duplexer.** If a duplexer is installed, slide it out the rear of the printer. If no duplexer is installed, proceed as follows.
 - ♦ **4000/4050 (Figure 3):** Remove the left and right duplex access covers by pulling up and out on the bottom of each cover.
 - ♦ **4100:** Slide out the Tray 2 Dust Cover.
4. **Release the fuser (Figure 4).** Loosen the two captive screws (4000/4050) or rotate the blue locking levers up (4100).
5. **Pull the fuser out.** Be careful to grasp it by the white plastic only. Do not pull on the black plastic diverter.
6. **Install the new fuser.** Reverse the preceding steps. On the 4100, make sure that the blue levers are rotated up before installing the fuser. After installing it, rotate the levers down to lock it in.

TRANSFER ROLLER REPLACEMENT:

1. **Remove the toner cartridge.** Open the top cover and pull out the toner cartridge. Put it in a dark place or cover it while it is out of the printer.
2. **Remove transfer roller (Figure 5).** The transfer roller is mounted to the floor of the printer. To remove it, use a screwdriver or pick to lift the left end of the metal shaft, and then slide the roller to the left to free the right end (on the 4000/4050 only, the right end can be pried up just like the left end).
3. **Install new transfer roller.** To install the new roller, slide the non-gear end of the shaft into the right holder (on the 4000/4050, you can just snap it in), then push down on the left end until it snaps in (make sure the black plastic collar is properly oriented, with the open end facing down). Take care not to touch the rubber surface of the transfer roller – wear rubber gloves or handle the metal shaft only. If the roller has a protective paper sleeve, remove the sleeve after installing the roller.



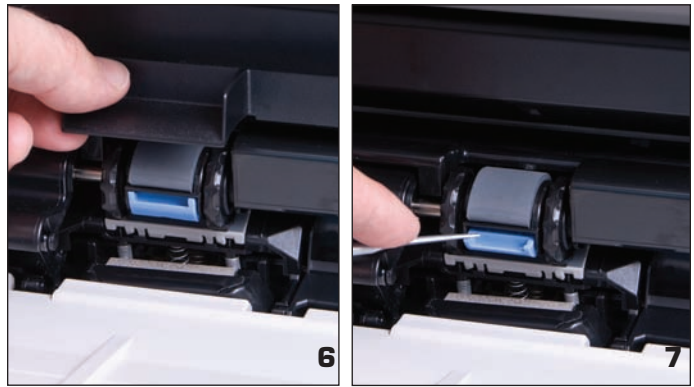
MAINTENANCE KIT INSTRUCTIONS

HP LJ 4000, 4050, 4100,

CONTINUED

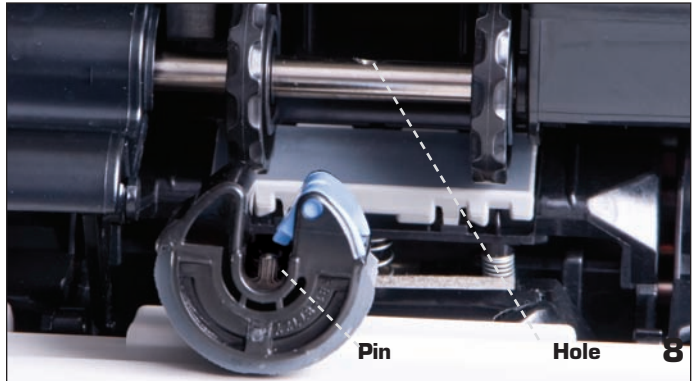
MP PICKUP ROLLER REPLACEMENT:

1. **Remove Envelope Entrance Cover.** Open the MP tray and locate the roller. Remove the plastic envelope entrance cover (directly above the roller) by pulling it toward you. (Figure 6).
2. **Remove Roller.** Pry open the blue latch on the roller (Figure 7), and then lift the roller out.
3. **Install New Roller.** Make sure that the pin on the underside of the roller lines up with the hole in the shaft (Figure 8). Secure the roller by closing the blue latch.
4. Replace the envelope entrance cover and close the MP tray.



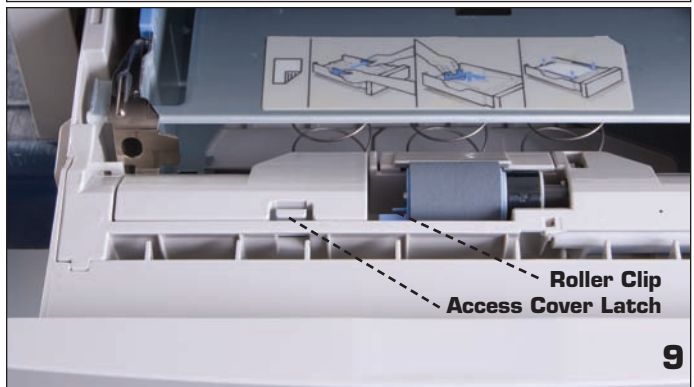
SEPARATION ROLLER REPLACEMENT (Figure 9):

1. **Remove Paper Cassette.** It may also help to remove all paper from the cassette. The separation roller is in the front of the cassette.
2. **Remove Access Cover.** Release the latch and lift the access cover to the left of the roller.
3. **Remove Roller.** Pinch the blue clip and slide the roller off to the left.
4. **Install New Roller.** When installing the new roller, make sure it locks into place. Also make sure to close and latch the access cover.
5. Repeat Steps 1-4 for any additional cassettes.



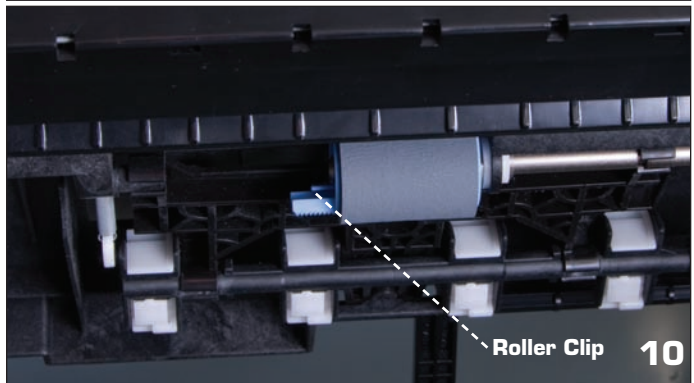
FEED ROLLER REPLACEMENT (Figure 10):

1. **Locate and Remove Roller.** The feed roller is mounted to the feeder frame directly above the separation roller. To access it, remove the paper cassette from the printer. The feed roller is identical to the separation roller, and is replaced the same way (except that there is no access cover).
2. Repeat Step 1 for any additional cassettes.



RESETTING THE MAINTENANCE MESSAGE/COUNT:

1. Turn the printer off. Then press and hold the left (“-”) side of both the Item and Value keys while powering on. Continue holding these keys until the display reads “Reset Maintenance Count” (on some printers, it will read “Count”), then release them. Once the display goes to “Ready,” print a configuration page and check that “Pages Since Last Maintenance” has gone to zero. If not, go to Step 2.
2. On some printers (most notably, the LaserJet 4000 when a maintenance kit is installed prematurely – before the “Perform User Maintenance” message comes up), Step 1 will not work. In these cases, you will have to go into service mode and directly manipulate the maintenance count:
 - a. Turn the printer off. Then press and hold **Select** and **Cancel Job** while powering on. Continue to hold these keys until all display lights are on, then release them.
 - b. Press and release the right side of **Menu**, then **Select**. The display will briefly show “Service Mode” and return to this after initializing.
 - c. Go into the Service Menu and set “Maintenance Count” to zero, one digit at a time (**Value** changes the underlined digit; **Select**



- d. Print a configuration page. One of two things will happen:
 - (1) “Pages Since Last Maintenance” will have gone to zero (in this case, no further action is required);
 - (2) “Perform User Maintenance” will come up on the display. In this case, go back and perform Step 1, which will now work.